



TIMES MICROWAVE SYSTEMS

TC-600-LCM (stock code: 3190-1406)

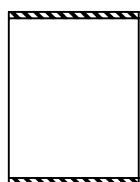
Type LC-male Plug

solder-on center contact

clamp-on outer contact

INSTALLATION INSTRUCTIONS

(Cable Types: LMR-600; 600 DB 600 FR; 600 ULTRAFLEX; 600 LLPL)



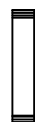
WEATHER SEAL
(WHEN SUPPLIED)



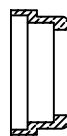
CLAMP
NUT



WASHER



GASKET



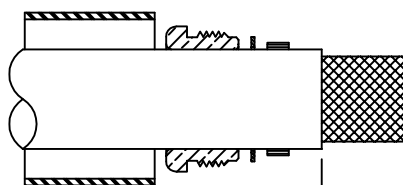
BRAID
CLAMP



CONTACT



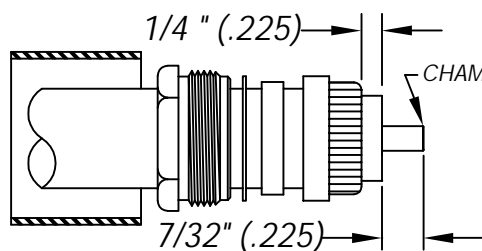
CONNECTOR
BODY



9/16" (.57)

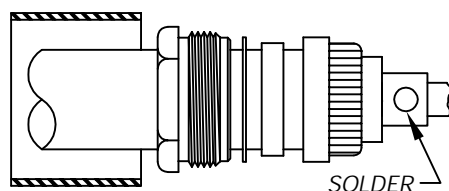
STEP 1

1. (A) Cut cable as shown. Slide weather seal, clamp nut, washer and gasket onto cable. Cut jacket to dimensions shown.



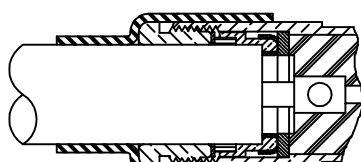
STEP 2

2. (A) Slide braid clamp over braid being certain that clamp seats squarely against cut end of jacket.
(B) Form braid wires smoothly over clamp as shown and trim off excess wire even with shoulder.
(C) Cut dielectric to dimension shown.
(D) Remove any residual plastic from center conductor.
(E) Deburr center conductor using a fine file or Times DBT-01 tool.



STEP 3

3. (A) Seat center contact firmly against cable dielectric and solder to cable conductor. Use minimal heat to minimize melting of foam dielectric. Remove any excess solder from contact surface.



STEP 4

WEATHER SEAL

4. (A) Insert assembly into connector body being certain braid clamp is seated. Tighten clamp nut to 60-65 lbs.-ins. torque.
(B) Heat shrink weather seal over rear of connector body and down over cable jacket using a hot air gun.