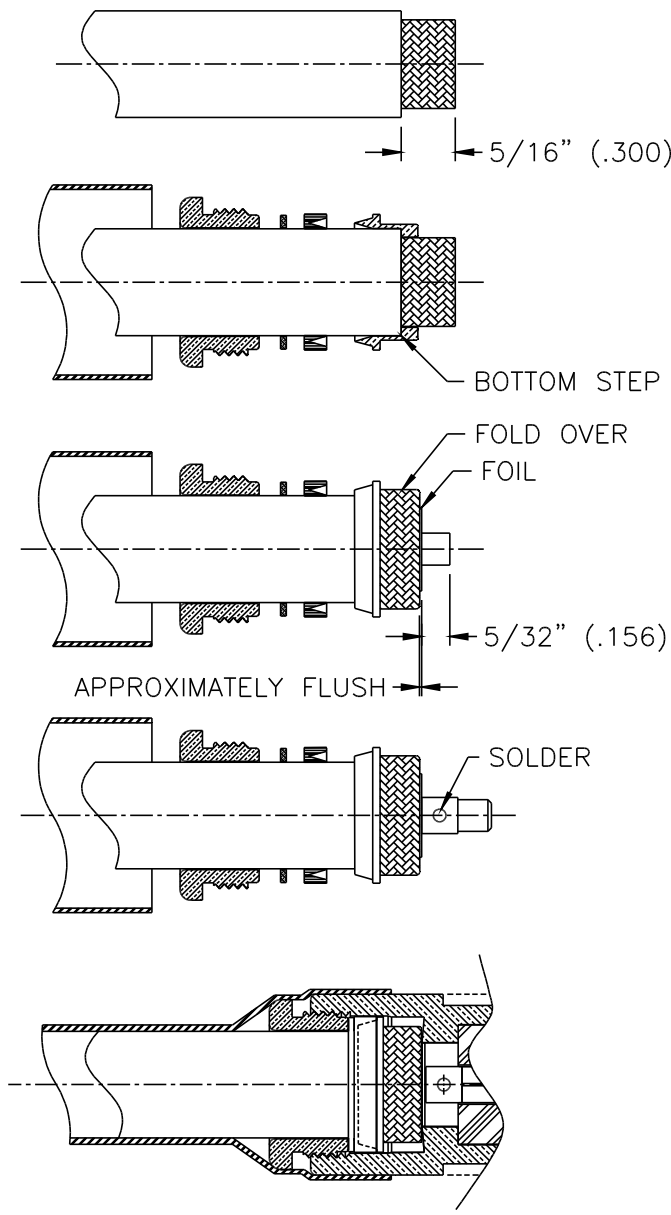
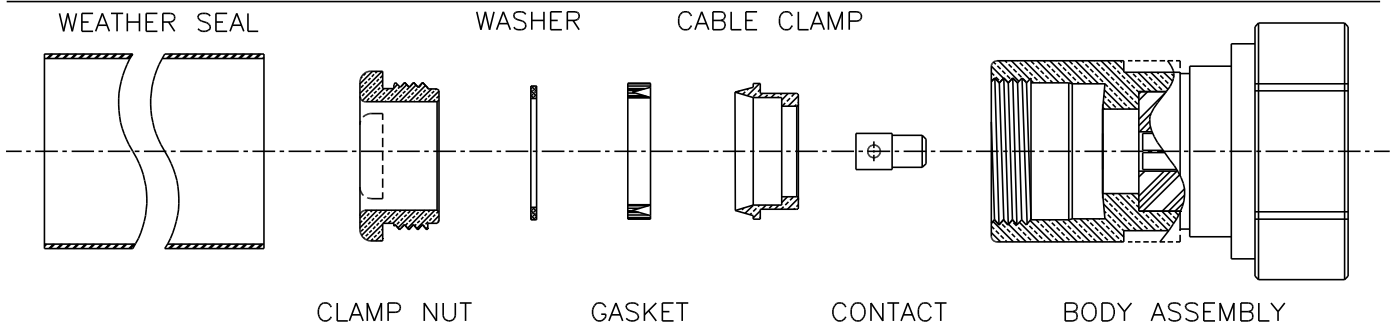


TIMES MICROWAVE SYSTEMS

358 Hall Avenue/P.O. Box 5039
 Wallingford, CT 06492-5039
 Tel: 203-949-8400
 FAX: 203-949-8423
 1-800-TMS-COAX
 www.timesmicrowave.com

INSTALLATION INSTRUCTIONS TC-600-716MC (3190-502)
 (Cable Types: LMR-600; 600-DB; 600-FR; 600-Ultraflex; 600-LLPL)



1. A. Trim cable per dimension shown.
2. A. Slide weather seal, clamp nut, washer, gasket and cable clamp onto cable. Jacket of cable must bottom on step in cable clamp.
 B. Comb braid wires out straight for folding back over shoulder of cable clamp.
3. A. Fold braid wires back over front shoulder of cable clamp and distribute it around circumference.
 B. Trim braid wires flush with shoulder of braid clamp; if necessary.
 C. Trim cable dielectric (foil) and center conductor to dimensions shown. Remove residual plastic from center conductor and deburr using Times DBT-01 or fine file.
4. A. Solder contact to center conductor, making sure back end of contact is flush with trimmed end of cable dielectric. Use minimal heat to minimize melting of foam dielectric.
5. A. Insert prepared cable with hardware into connector until fully seated, then check for fully seated gasket and washer.
 B. Insert and tighten clamp nut.
 C. Heat shrink weather seal over rear of connector body and down onto cable jacket using a hot air gun.